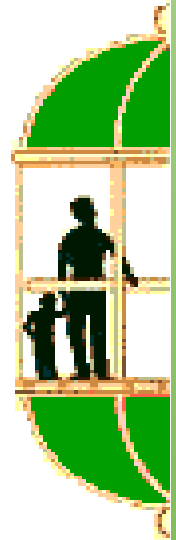


DAIREN

UPS

Uninterruptible Power Supply

(Supersedes EBOPS)



- ★ Fulfilled and complied to the BCA latest standard SS550 and requirement IEC 62040-1
- ★ Micro-processor technology with modular designing concept for most efficient maintenance and services
- ★ Most compact and unique design. Reliable in product quality for contemporary business environment, both commercial and residential projects
- ★ Four stages of charging MCU technology with temperature compensation sensor
- ★ Revolutionary performance for all passenger and cargo lifts



Power Failure? Don't Panic!

Being trapped in the lift during power failure can be frightening and frustrating. It might take minutes or even hours, before power is resumed, causing inconveniences to all works of life

DAIREN UPS keeps you out of the dark, provides you the ventilation and call for SOS

DAIREN UPS is specially designed and complied to IEC 62040-1 for lighting, ventilation and alarm for passenger lift car in the event of power failure

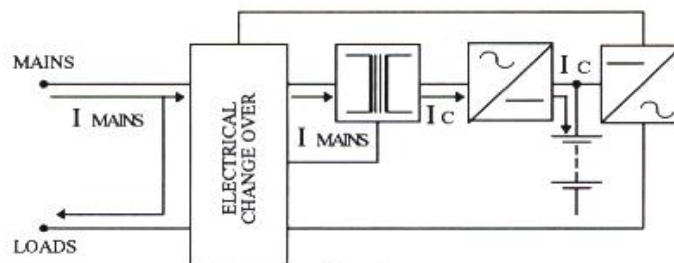


Figure 1

DAIREN UPS consists of a rectifier, a set of batteries and an inverter. It enables the batteries to be charged through the rectifier and at the same time provides supply to the load during normal condition. (Figure 1)

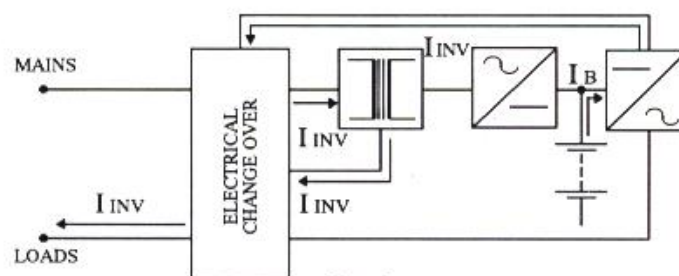


Figure 2

The battery will restore its energy in the form of DC current to the inverter and invert to an AC current supplies to the load when the mains fails (Figure 2)

When the AC mains is resumed, the batteries will be recharged immediately and through the electrical change over contact, the mains will supply to the loads as shown in (Figure 1)



Product features:

Enclosure: The cubicle is protected against corrosion by exclusive power coating 1.2mm thickness electro-galvanised steel sheet welded on all seams secured with standard can lock.

LED display card: With LED luminous indicating functional operation

DC Voltmeter: To indicates the battery terminal voltage

DC Ammeter: The centre zero ammeter is to indicates the charging and discharging current of the batteries

Test Switch: Normally closed self-resetting push button switch is used to simulate the failure of the AC supply

Output MCB: This MCB is to connect (ON position) or disconnected (OFF position) the loads to the UPS supply & provides overload protection

Input MCB: This MCB is to isolates the AC supply from the mains to the UPS unit & provides overload protection for the transformer and rectifier

Spiral Cell Battery: Good performance and longer battery life

Technical Specifications:

Model	SQW 12-4	SSW 24-4
Input voltage (V)	230 +/-10%	
Input frequency (Hz)	47-53	
Rated power (W)	120	
Rated voltage (V)	230 +/- 10%	
Rated frequency (Hz)	50Hz +/-1%	
Battery voltage (V)	24	
Technology	Embedded MCU control	
Waveform	Modified Sinewave	
Back up time (hours)	2	4
DC/DC converter (V)	24/12	24/24
Approx. weight (kgs)	18	18
Dimension (H x L x W) mm	610 x 430x180	610 x430x180
Temp. compensation	Yes	
Battery used	2 x 6 SPBT 25	2 x 6 SPBT 25
Safety Standard	IEC62040-1	

DAIREN Components & Equipment Pte Ltd

Office: Block 3027A Ubi Road 3 #01-93 Singapore 408656

Tel No: 68485980

e mail: alfred_tankk@singnet.com.sg

web site: www.dce.com.sg