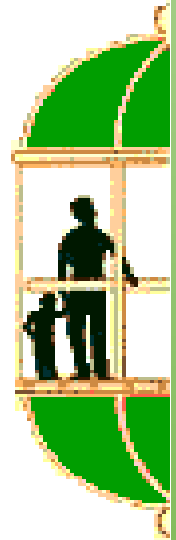


# DAIREN

# UPS

## Uninterruptible Power Supply

Lift power backup for fan, light and alarm bell



- ★ Fulfilled and complied to the BCA latest standard SS550 and requirement IEC 62040-1
- ★ Micro-processor technology with modular designing concept for most efficient maintenance and services
- ★ Most compact and unique design. Reliable in product quality for contemporary business environment, both commercial and residential projects
- ★ Four stages of charging MCU technology with temperature compensation sensor
- ★ Revolutionary performance for all passenger and cargo lifts



# Power Failure? Don't Panic!

Being trapped in the lift during power failure can be frightening and frustrating. It might take minutes or even hours, before power is resumed, causing inconveniences to all works of life

**DAIREN** UPS keeps you out of the dark, provides you the ventilation and call for SOS

**DAIREN** UPS is specially designed and complied to IEC 62040-1 for lighting, ventilation and alarm for passenger lift car in the event of power failure

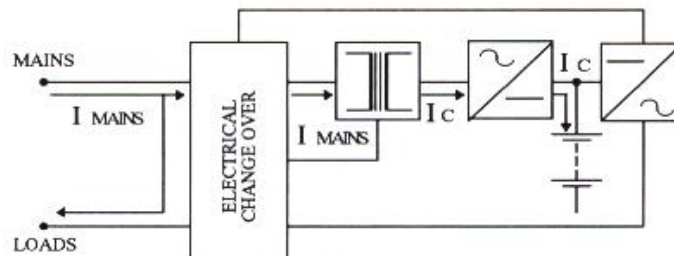


Figure 1

**DAIREN** UPS consists of a rectifier, a set of batteries and an inverter. It enables the batteries to be charged through the rectifier and at the same time provides supply to the load during normal condition. (Figure 1)

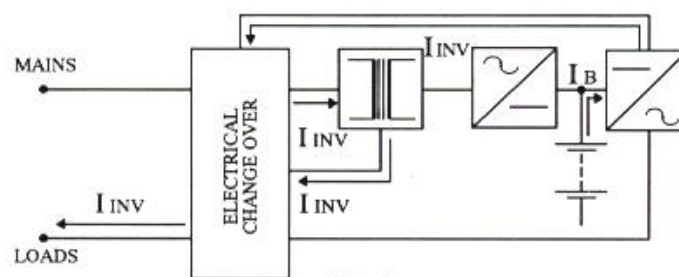


Figure 2

The battery will restore its energy in the form of DC current to the inverter and invert to an AC current supplies to the load when the mains fails (Figure 2)

When the AC mains is resumed, the batteries will be recharged immediately and through the electrical change over contact, the mains will supply to the loads as shown in (Figure 1)



## Product features:

**Enclosure:** The cubicle is protected against corrosion by exclusive power coated 1.2mm thickness electro-galvanised steel sheet welded on all seems secured with standard can lock.

**Digital LED display panel:** With LED luminous indicating functional operation

**Digital Voltmeter:** To indicate the battery terminal voltage

**Digital Ammeter:** To indicate the charging and discharging current of the batteries

**Output MCB:** This MCB is to connect (ON position) or disconnected (OFF position) the loads to the UPS supply & provides overload protection

**Input MCB:** This MCB is to isolate the AC supply from the mains to the UPS unit & provides overload protection for the transformer and rectifier

**Timmer setting:** To set the duration of current and voltage display

## Technical Specifications:

Model	SQW12-4ND	SSW24-4ND
Input voltage (V)	230 +/-10%	
Input frequency (Hz)	47-53	
Rated power (W)	120	
Rated voltage (V)	230 +/- 10%	
Rated frequency (Hz)	50Hz +/-1%	
Battery voltage (V)	24	
Technology	Embedded MCU control	
Waveform	Modified Sinewave	
Back up time (hours)	4	4
DC/DC converter (V)	24/12	24/24
Approx. weight (kgs)	13	13
Dimension (H x L x W) mm	450 x 370 x 190	450 x 370 x 190
Temp. compensation	Yes	
Battery model	2 x 12SP33L	2 x 12SP28
Battery Capacity	12V 90W	12V 100W
Safety Standard	IEC62040-1	

**DAIREN** Components & Equipment Pte Ltd

Office: Block 3027A Ubi Road 3 #01-93 Singapore 408656

Tel No: 68485980

e mail: [alfred\\_tankk@singnet.com.sg](mailto:alfred_tankk@singnet.com.sg)

Warehouse: Block 3027A Ubi Road 3 #01-93 Singapore 408656